

SUBSEA RESPONDER

MAIN CHARACTERISTICS

Classification	ABS
Classification ID	7163405
IMO	9201645
Flag	Marshall Islands
Port of Registry	Majuro
Year Built	1998 (Major Refit in 2021)
O.N.	10258
Call Sign	V7A5816
MMSI	538010258
Hull Number	6670
Certifications	SOLAS Full
Notations	A1, AMS, DPS-2

SPECIAL FEATURES

Subsea Knuckle Boom Crane	Max Lift: 43.32 US Tons Active Heave Compensation
Provision Crane	Max Lift: 2.39 US Tons
Internet Access	Starlink

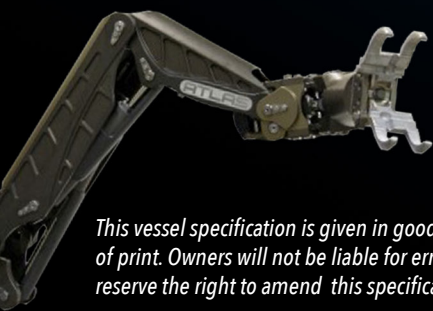
MACHINERY

Main Engine	2x EMD 16-645-E6 1950HP
Z-Drives Unit	2x Kamewa Aquamaster 2001
Auxiliary Generator	3x Detroit 250kW/440V/60Hz/3Ph 1x Cat. 3508B 910kW/440V/60Hz/3Ph
Emergency Generator	1x Detroit Diesel 75kW/480V/60Hz/3Ph

PERFORMANCE

Max Speed	10 kts
Crusing Speed	9 kts
In-Port Fuel Consumption	350 gallons/day*
Fuel Consumption	2400 gallons/day*
DP Mode	1750 gallons/day*

*These figures are estimates based on average use for normal operations. Actual fuel consumption will vary based on operations, weather, and subsurface conditions.



DIMENSIONS

Length Overall	217 ft
LBP	210 ft
Back Deck	2,771.2 sq. ft.
Breadth	54 ft
Depth	20 ft
Max Draft	15.5 ft

CAPACITIES

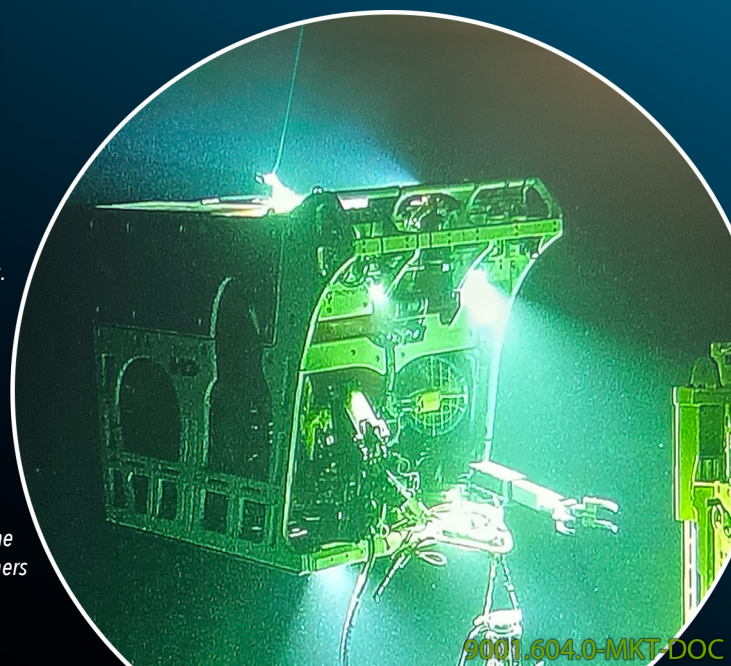
Deadweight	2175 US Tons
Ballast	470,194 gallons
Potable Fresh Water	42,643 gallons
Fuel	235,255 gallons
Deck Loading	1,000 lbs/ sq. ft

ACCOMMODATIONS

Berthing Total	57
Single Berth Cabins	3
Double Berth Cabins	1
Four-Man Cabins	13

ROV

Model	Schilling HD96 150 hp
Year Built	2024
Active Heave Compensation	Sepro
Maximum Depth	10,000 ft
Owner	Hydra



This vessel specification is given in good faith and assumed to be accurate at the time of print. Owners will not be liable for errors, omissions, or misprints published. Owners reserve the right to amend this specification without notice.